

EverBlock Accordion Door System

INSTALLATION GUIDE

STEP ONE

- Build your EverBlock wall at least 7ft high to install the Accordion Door System.



STEP TWO

- Apply Track Lubricant to the round nodules at the top of the Accordion Door.
- Slide the round nodules into the Door Lintel with Track.
- Lift the unit and place at the top of the block wall, making sure the holes fit snugly onto the lugs.



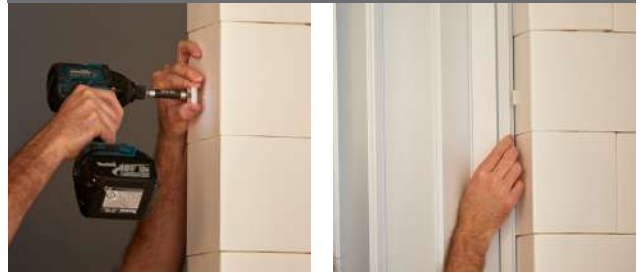
STEP THREE

- Insert 2 Door Handle Pins into one Door Handle, and slot the handle pins through holes on Door Panel Unit.
- Attach remaining Door Handle to the Handle Pins and squeeze together for a tight fit.



STEP FOUR

- Secure the Accordion Door to the wall by fastening the Door Support Clips to one side (centered) with the screws.
- Then snap that end of the Door Panel into the Clips.



STEP FIVE

- Align Receiver Channel and fasten with screw.
- Align and fasten the Magnetic Plates along the Channel Receiver.
- Tighten all screws with a screwdriver by hand to not strip the screw.



Includes:

Box 1 - Door Lintel with Track

Box 2 - Door Panel Unit, Receiver Channel, Magnetic Plates & Parts Bag

Parts Bag:

2 Door Handles with 2 Handle Pins, 14 One-Inch Screws, 5 Door Support Clips, 3 Magnetic Plates, 1 Tube Track Lubricant