

**RECONFIGURABLE
& REUSABLE
MODULAR
HOMELESS SHELTERS
& FACILITIES**

EverBlock® & EverPanel® are used to create temporary or semi-permanent shelters, facilities and housing for the under privileged and displaced.



Build Out Complete Floor Plans

Helping House Those Who Do Not Have A Home

EverBlock modular wall solutions are fully **customizable, 100% reusable and reconfigurable**, and can meet any government or municipality guidelines.

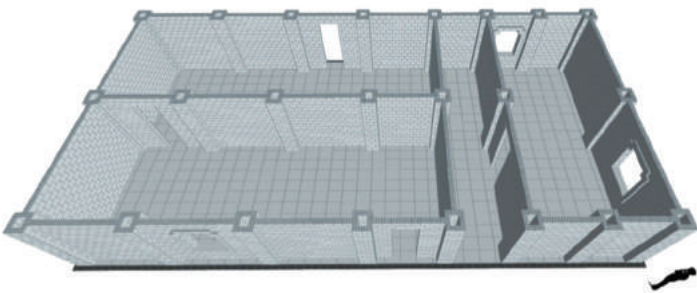
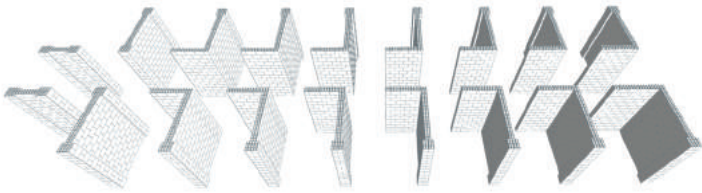
Use **EverBlock®** and **EverPanel®** to delineate large spaces, build temporary walls, divide spaces, create shelters, privacy rooms rooms and deploy instant offices.



COLORFUL MODULAR BUILDING BLOCKS TO BUILD WALLS... AND MORE

Organizations and facilities interested in building temporary walls, portable room dividers, demountable rooms and housing structures to help combat homelessness use EverBlock's modular building blocks.

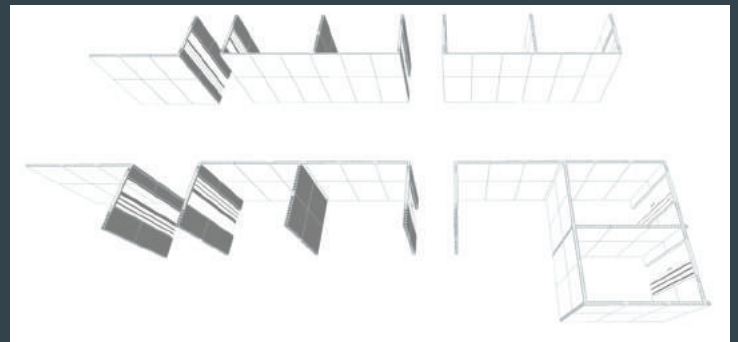
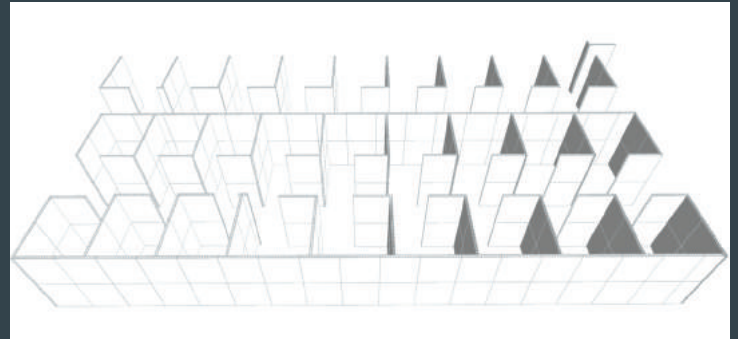
There are no tools required for building and all EverBlock structures are 100% reusable and reconfigurable, allowing organizations the freedom to assist the less fortunate in temporary or permanent housing in any location.



SOPHISTICATED MODULAR WALL PANELS

The **EverPanel** instant wall system is flexible, allowing you to build all types of floor plans, economically divide spaces and define areas.

Quickly build temporary rooms, dividers and privacy partitions using a series of lightweight, durable fiberglass composite panels that connect with adjacent panels using a proprietary lug and connector system.



EVERBLOCK®

Varying size building blocks allow for custom interior walls to meet any spacial needs and blocks are available in 16 exciting colors to match your design goals. Build accent walls and dividers in any height, width, thickness, color or shape.

EverBlock is used to create temporary or permanent privacy rooms, portable dividers, modular furniture and furnishings that are simple to build and require no tools to assemble.


Reconfigure walls as needs change and repurpose building blocks into a multitude of other objects; from desks to seating, and from shelving to tables.

EVERPANEL®

With 18 panel size options, window panels and door panels, various panels can be combined and connected to build permanent or temporary walls that meet a space's specific needs.

EverPanel allows clients to run electrical and power cables within and between panels in any direction. Add doors, windows and openings as needed. Adhere standard adhesive backed wallpaper to your walls to customize your space and walls in an instant.

Installation is quick and simple, there are no tools required for assembly. Reconfigure walls as needed. Sections are easy to transport, install, remove and store compactly. Build temporary offices, walls, rooms and partitions as needed or permanent walls as your shelter grows.

FEATURES	EVERBLOCK BUILDING BLOCKS	EVERPANEL MODULAR WALL PANELS
Color Options	16 Color Options	White
Integrated Cable Channels	Limited	Yes
Window Panels	No	Clear polycarbonate panels
Door Options Available	Accordion door	Accordion door & standard swing door
Fire Tested	UL94HB	E84
Reusable & Reconfigurable Into Other Objects/Structures	Yes	Can be reconfigured into other wall sizes & layouts
Shelving & Desk Accessories Available	Yes	No
Wall & Ceiling Mounts	Wall mount	Wall mount & ceiling bracket
Can Receive Wallpaper	Yes	Yes
Material	Hi-Impact Polypropylene Co-Polymer ("no-break") with UV Inhibitors	Moisture & Impact Resistant Fiberglass Reinforced Panels (FRP), bonded to a fire retardant ABS skeleton, incorporating additives for smoke reduction, fire retardancy & additional durability.
Typical Wall Width	6"	3"
Manufactured in the USA 	Yes	Yes

Features & Specifications



EASY TO INSTALL MODULAR BLOCKS

The **EverBlock®** system is modular and is designed to be 100% reusable and reconfigurable. Choose between **different sized** blocks and finishing caps, as well as **16 vibrant colors**, to create objects for all types of uses.

BLOCK MATERIAL

Hi-Impact Polypropylene Co-Polymer (“no-break”) with UV Inhibitors added. EverBlock is recyclable.

FIRE RATING: UL94HB

UL94HB (Underwriters laboratory Yellow Card Number): signifying that EverBlock material embodies a slow burn rate of 2” per minute for a 2” wide by 0.5” in thickness test sample. Furthermore, UL94HB signifies that the material will not flare up when exposed to an open flame.

Hot wire ignition rating: 3

WIDE SELECTION OF COLORS

We offer a wide palette of colors, enabling you to match design needs, corporate colors, event themes, or other color requirements.



UNIQUE PRODUCT FEATURES

- Finishing Caps Create a Flat Top Surface
- Shelving, DeskTops, and Doorway Lintels
- Durable, Stable, Waterproof, and Easy To Clean
- Easily Transportable

MODULE SIZES & WEIGHTS

- **Full Block:** 12”L x 6”W x 6”H (+1” for lugs) - 1.72 lbs.
- **Line Block:** 12”L x 3”W x 6”H (+1” for lugs) - 0.87 lbs.
- **Half Block:** 6”L x 6”W x 6”H (+1” for lugs) - 0.91 lbs.
- **Quarter Block:** 3”L x 6”W x 6”H (+1” for lugs) - 0.53 lbs.
- **Single Lug Block:** 3”L x 3”W x 6”H (+1” for lug) - 0.25 lbs.
- **Finishing Cap:** 12”L x 6”W x 1.1”H - 0.39 lbs.
- **Finishing Cap Quarter Size:** 3”L x 6”W x 1.25”H - 0.11 lbs.



EASY TO INSTALL MODULAR WALL PANELS

The **EverPanel** system is **modular**, which means you start with as many panels as you need and can later add to your construction. You can easily **reconfigure, transport, and re-assemble** your designs in minutes and re-use panels in new locations or in new configurations.

PANEL MATERIAL

Moisture and Impact Resistant **Fiberglass Reinforced Panels (FRP)**, bonded to a fire retardant ABS skeleton, incorporating additives for smoke reduction, fire retardancy and additional durability.

FIRE RATING

Fire Rating E84 - Pass - Class C.

R-Value: R-Value for EverPanel panels is estimated at **R-2** based on 3 inches of air space and two exterior FRP walls .

COLORS

- **White FRP Panel** (with White Frame)

UNIQUE PRODUCT FEATURES

- UV Protection
- Cable Channels
- Easily Transportable

MODULE SIZES & WEIGHTS

- **8ft x 4ft Panel:** 96” x 48” x 3” - 60.5 lbs.
- **8ft x 3ft Panel:** 96” x 36” x 3” - 46.5 lbs.
- **8ft x 2ft Panel:** 96” x 24” x 3” - 34 lbs.
- **8ft x 1ft Panel:** 96” x 12” x 3” - 19.5 lbs.
- **7ft x 4ft Panel:** 84” x 48” x 3” - 55 lbs.
- **7ft x 3ft Panel:** 84” x 36” x 3” - 40 lbs.
- **7ft x 2ft Panel:** 84” x 24” x 3” - 30.5 lbs.
- **7ft x 1ft Panel:** 84” x 12” x 3” - 17.5 lbs.
- **4ft x 4ft Panel:** 48” x 48” x 3” - 33.5 lbs.
- **4ft x 3ft Panel:** 48” x 36” x 3” - 23.5 lbs.
- **4ft x 2ft Panel:** 48” x 24” x 3” - 18 lbs.
- **4ft x 1ft Panel:** 48” x 12” x 3” - 10.5 lbs.
- **3ft x 3ft Panel:** 36” x 36” x 3” - 19 lbs.
- **3ft x 2ft Panel:** 36” x 24” x 3” - 14 lbs.
- **3ft x 1ft Panel:** 36” x 12” x 3” - 9 lbs.
- **2ft x 2ft Panel:** 24” x 24” x 3” - 10 lbs.
- **2ft x 1ft Panel:** 24” x 12” x 3” - 6 lbs.
- **1ft x 1ft Panel:** 12” x 12” x 3” - 3.5 lbs.

PANEL ACCESSORIES

- **Lug Connector** (EP-LUG)
- **Finishing Cap** (EP-CAP)
- **2-Way Interpanel Connector** (EP-2 Way)
- **3-Way Interpanel Connector** (EP-3 Way)
- **Mounting Cap** (EP-MOUNT)
- **Panel Door Kit** (EP-DOOR)
- **Lintel** (EP-LINTEL NARROW)
- **L-Channel Extrusion** (EP-L CHANNEL)
- **Ceiling Connector Bracket** (EP-CEILING BRACKET)
- **Window** (EP-WINDOW)