

EverBlock

Specifications

Questions?
 Call us today at 844-910-0369
 or contact us by email at
sales@everblocksystems.com

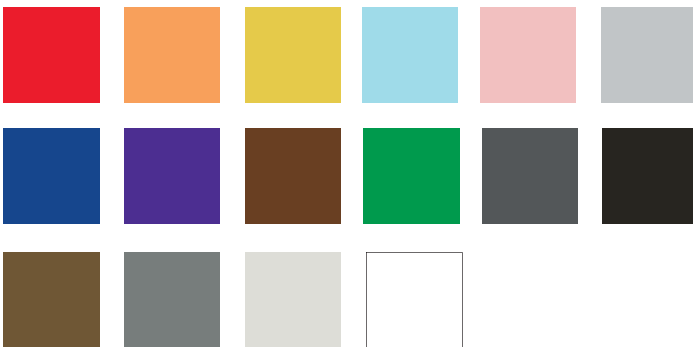


CPSIA
Compliant

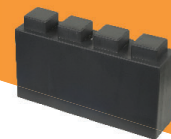
Block	Size (in, L x W x H)	Weight (lbs)
Full Block	12 x 6 x 6	2.3
Line Block	12 x 3 x 6	1.1
Half Block	6 x 6 x 6	1.1
Quarter Block	3 x 6 x 6	0.6
Single Block	3 x 3 x 6	0.2
Full Cap	12 x 6 x 1.1	0.3
Quarter Cap	3 x 6 x 1.1	0.1

Colors

We offer a wide selection of colors, enabling you to match design needs, corporate or collegiate colors, or event themes.



Full Block



Line Block



Half Block



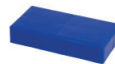
Full Cap



Quarter Block



Single Block



Quarter Cap

Fire Rating

UL94HB (Underwriters laboratory Yellow Card Number): signifying that EverBlock material embodies a slow burn rate of 2" per minute for a 2" wide by 0.5" thick test sample. Furthermore, UL94HB signifies that the material will not flare up when exposed to an open flame. Hot wire ignition rating: 3

Material

Hi-impact, recyclable #5 Polypropylene with "no-break" co-polymers and added UV inhibitors for outdoor use.

FAQs

Are The Blocks Soundproof?

EverBlocks have surprisingly strong sound dampening qualities, better than most standard temporary walls. Inside each block are eight 3" x 3" hollow chambers, providing at minimum 6" of air and 3 layers of plastic.

How Stable Is An EverBlock Wall?

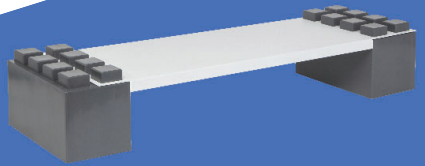
EverBlocks are very easy to use, build and design with. When building walls we recommend adding columns to each side of a wall, for additional support. For walls longer than 5ft we recommend adding a middle column as well for added stability.

Can I Run Power through my EverBlock Wall?

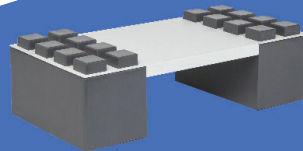
Each 12" EverBlock contains 2 cable channels that allow you to run power cables, create illumination with LED lighting strips, or stabilize larger creations. 6" EverBlocks contain one channel that aligns with one of the 12" block channels. Holes are 0.5" in diameter and can accommodate most conduit and cabling.

Accessories

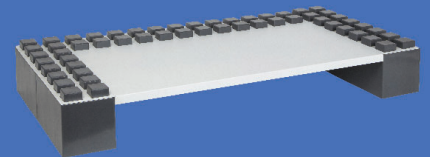
Create openings with lintels or door kits for privacy or make shelving and desks for your office or living space. No tools are required.



Half Piece for 72" Shelf



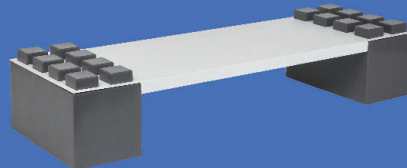
24" Shelf



48" Desk Top



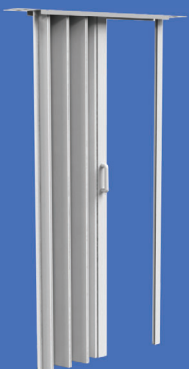
48" Lintel



36" Shelf



EverBlock Foot Piece
(for use with 4' walls or under)



7' EverBlock Accordion Door Kit



Warranty

Standard 2-year warranty against manufacturer's defects.

No dust or debris of typical construction
No Tools or Glue Required!