

MODULAR BUILDING SYSTEMS AND MOUT TRAINING FACILITIES

EverBlock® & **EverPanel®** are used to create temporary or semi-permanent MOUT military training facilities, shelters, compounds and housing for service members.



Build Out Complete Floor Plans MOUT Military Training Facilities

EverBlock modular wall solutions are fully **customizable**, **100% reusable** and **reconfigurable**, and can meet any government or municipality guidelines.

Use **EverBlock®** and **EverPanel®** to delineate large spaces, build temporary walls, divide spaces, create shelters, medical facilities, privacy rooms and deploy instant offices.

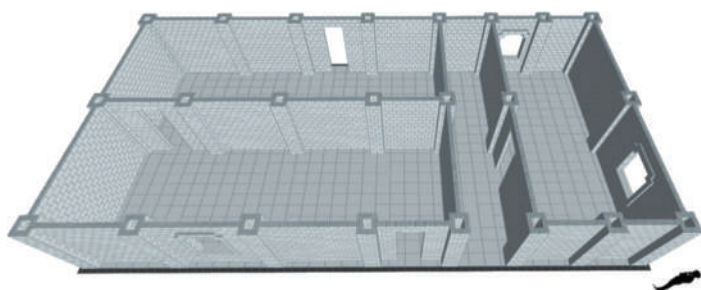


MODULAR BUILDING BLOCKS

EverBlock is perfect for military tent structures, flooring, disaster relief shelters and building sustainable MOUT training facilities.

From tactical operations centers (TOC) to sleeping tents and from kitchen and hospital tents to storage tents, EverBlock is the ideal system for remote deployment in harsh environments. Build rapidly deployable shelters to larger scale warehouse structures, EverBlock can be used to keep personnel and equipment out of the mud, sand and dirt.

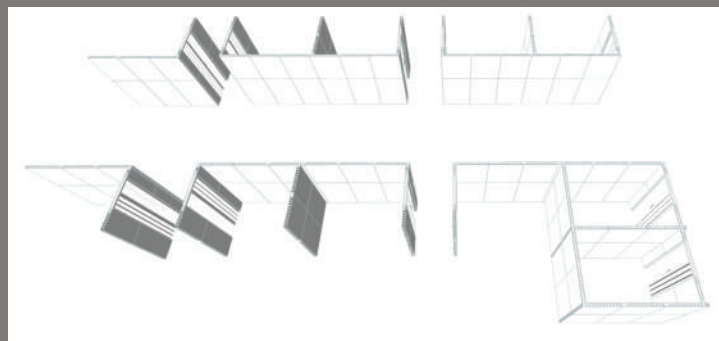
With a lack of infrastructure, most remote sites require immediate deployment of structures to house support and relief staff as well as inhabitants and victims. Time is of the essence and flexibility is key since needs change - in real time.



MODULAR WALL PANELS

The **EverPanel** instant wall system is flexible, allowing you to build all types of floor plans, divide spaces, define areas, create sleeping barracks and build out complete shoot houses, private medical offices and MOUT military training facilities.

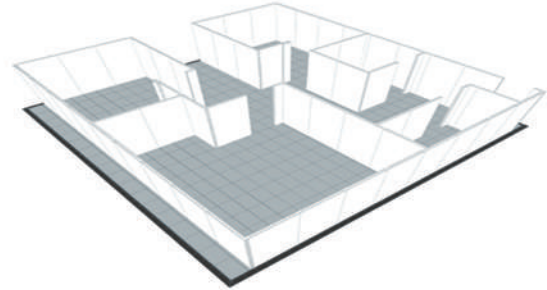
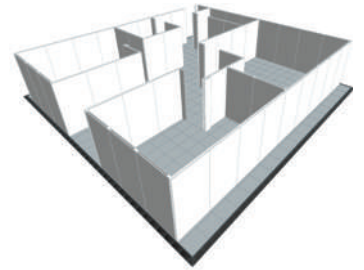
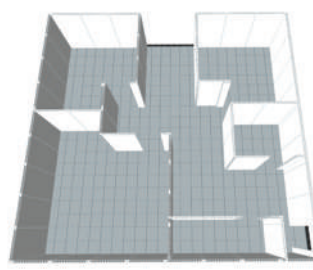
Quickly build temporary rooms, dividers and structures using a series of lightweight, durable fiberglass composite panels that connect with adjacent panels using a proprietary lug and connector system. Installation is quick and simple, there are no tools required for assembly. Reconfigure walls as needed. Sections are easy to transport, install, remove and store compactly.




EVERBLOCK®



EVERPANEL®



***MILITARY AND VETERAN DISCOUNTS AVAILABLE
THANK YOU FOR YOUR SERVICE**

FEATURES	EVERBLOCK BUILDING BLOCKS	EVERPANEL MODULAR WALL PANELS
Color Options	16 Color Options	White
Integrated Cable Channels	Limited	Yes
Window Panels	No	Clear polycarbonate panels
Door Options Available	Accordion door	Accordion door & standard swing door
Fire Tested	UL94HB	E84
Reusable & Reconfigurable Into Other Objects/Structures	Yes	Can be reconfigured into other wall sizes & layouts
Shelving & Desk Accessories Available	Yes	No
Wall & Ceiling Mounts	Wall mount	Wall mount & ceiling bracket
Can Receive Wallpaper	Yes	Yes
Material	Hi-Impact Polypropylene Co-Polymer ("no-break") with UV Inhibitors	Moisture & Impact Resistant Fiberglass Reinforced Panels (FRP), bonded to a fire retardant ABS skeleton, incorporating additives for smoke reduction, fire retardancy & additional durability.
Typical Wall Width	6"	3"
Proudly Manufactured in the USA 	Yes	Yes

Features & Specifications



EASY TO INSTALL MODULAR BLOCKS

The **EverBlock®** system is modular and is designed to be 100% reusable and reconfigurable. Choose between **different sized** blocks and finishing caps, as well as **16 vibrant colors**, to create objects for all types of uses.

BLOCK MATERIAL

Hi-Impact Polypropylene Co-Polymer ("no-break") with UV Inhibitors added. EverBlock is recyclable.

FIRE RATING: UL94HB

UL94HB (Underwriters laboratory Yellow Card Number): signifying that EverBlock material embodies a slow burn rate of 2" per minute for a 2" wide by 0.5" in thickness test sample. Furthermore, UL94HB signifies that the material will not flare up when exposed to an open flame.

Hot wire ignition rating: 3

WIDE SELECTION OF COLORS

We offer a wide palette of colors, enabling you to match design needs, corporate colors, event themes, or other color requirements.



UNIQUE PRODUCT FEATURES

- Finishing Caps Create a Flat Top Surface
- Shelving, DeskTops, and Doorway Lintels
- Durable, Stable, Waterproof, and Easy To Clean
- Easily Transportable

MODULE SIZES & WEIGHTS

- **Full Block:** 12"L x 6"W x 6"H (+1" for lugs) - 1.72 lbs.
- **Line Block:** 12"L x 3"W x 6"H (+1" for lugs) - 0.87 lbs.
- **Half Block:** 6"L x 6"W x 6"H (+1" for lugs) - 0.91 lbs.
- **Quarter Block:** 3"L x 6"W x 6"H (+1" for lugs) - 0.53 lbs.
- **Single Lug Block:** 3"L x 3"W x 6"H (+1" for lug) - 0.25 lbs.
- **Finishing Cap:** 12"L x 6"W x 1.1"H - 0.39 lbs.
- **Finishing Cap Quarter Size:** 3"L x 6"W x 1.25"H - 0.11 lbs.



EASY TO INSTALL MODULAR WALL PANELS

The **EverPanel** system is **modular**, which means you start with as many panels as you need and can later add to your construction. You can easily **reconfigure, transport, and re-assemble** your designs in minutes and re-use panels in new locations or in new configurations.

PANEL MATERIAL

Moisture and Impact Resistant **Fiberglass Reinforced Panels (FRP)**, bonded to a fire retardant ABS skeleton, incorporating additives for smoke reduction, fire retardancy and additional durability.

FIRE RATING: E84 CLASS C

Fire Rating E84 - Pass - Class C.

R-Value: R-Value for EverPanel panels is estimated at **R-2** based on 3 inches of air space and two exterior FRP walls.

COLORS

- **White FRP Panel** (with White Frame)

UNIQUE PRODUCT FEATURES

- UV Protection
- Cable Channels
- Easily Transportable

MODULE SIZES & WEIGHTS

- | | |
|--|--|
| • 8ft x 4ft Panel: 96" x 48" x 3" - 60.5 lbs. | • 4ft x 3ft Panel: 48" x 36" x 3" - 23.5 lbs. |
| • 8ft x 3ft Panel: 96" x 36" x 3" - 46.5 lbs. | • 4ft x 2ft Panel: 48" x 24" x 3" - 18 lbs. |
| • 8ft x 2ft Panel: 96" x 24" x 3" - 34 lbs. | • 4ft x 1ft Panel: 48" x 12" x 3" - 10.5 lbs. |
| • 8ft x 1ft Panel: 96" x 12" x 3" - 19.5 lbs. | • 3ft x 3ft Panel: 36" x 36" x 3" - 19 lbs. |
| • 7ft x 4ft Panel: 84" x 48" x 3" - 55 lbs. | • 3ft x 2ft Panel: 36" x 12" x 3" - 14 lbs. |
| • 7ft x 3ft Panel: 84" x 36" x 3" - 40 lbs. | • 3ft x 1ft Panel: 36" x 12" x 3" - 9 lbs. |
| • 7ft x 2ft Panel: 84" x 24" x 3" - 30.5 lbs. | • 2ft x 2ft Panel: 24" x 24" x 3" - 10 lbs. |
| • 7ft x 1ft Panel: 84" x 12" x 3" - 17.5 lbs. | • 2ft x 1ft Panel: 24" x 12" x 3" - 6 lbs. |
| • 4ft x 4ft Panel: 48" x 48" x 3" - 33.5 lbs. | • 1ft x 1ft Panel: 12" x 12" x 3" - 3.5 lbs. |

PANEL ACCESSORIES

- **Lug Connector** (EP-LUG)
- **Finishing Cap** (EP-CAP)
- **2-Way Interpanel Connector** (EP-2 Way)
- **3-Way Interpanel Connector** (EP-3 Way)
- **Mounting Cap** (EP-MOUNT)
- **Panel Door Kit** (EP-DOOR)
- **Lintel** (EP-LINTEL NARROW)
- **L-Channel Extrusion** (EP-L CHANNEL)
- **Ceiling Connector Bracket** (EP-CEILING BRACKET)
- **Window** (EP-WINDOW)